

Access to Locally Produced Food in Montgomery County



Why is Locally Produced Food Important?

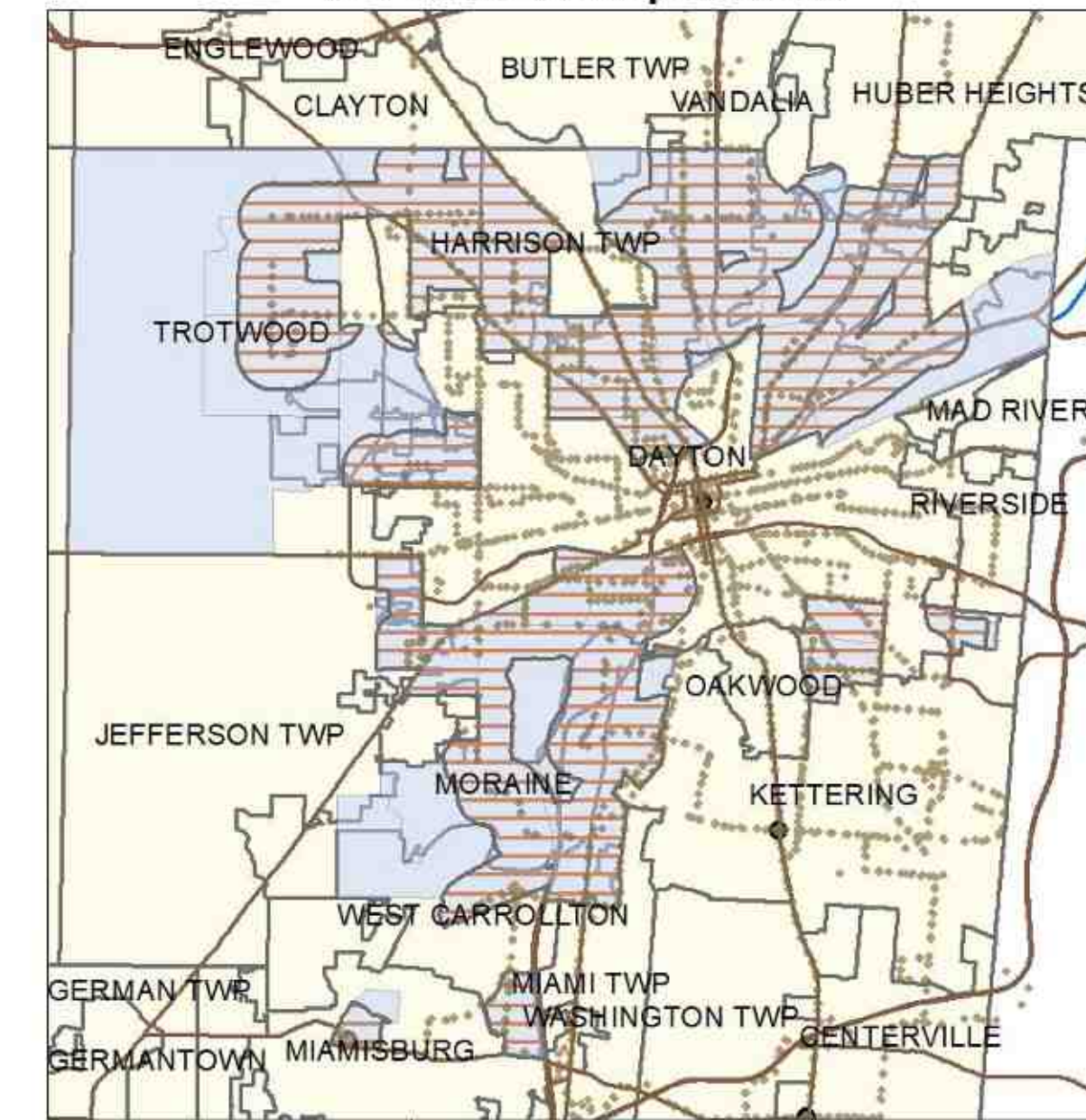
- Less time in transit and storage = better nutrition
- Regional food security
- Local economic, community, and social benefits
- Miami Valley farmers who grow produce or raise livestock (as opposed to commodity crops like corn and soybeans) need to be able to connect with customers and buyers.
 - Typically contract with grocery chains, restaurants, or farmers' markets
 - Some offer CSA (community-supported agriculture) shares
 - Others may sell what they produce on-site; e.g., fruits and vegetables, value-added foods like jams or cider, meat and dairy products (chickens, eggs, milk, cheese), baked goods

What Are Food Deserts?

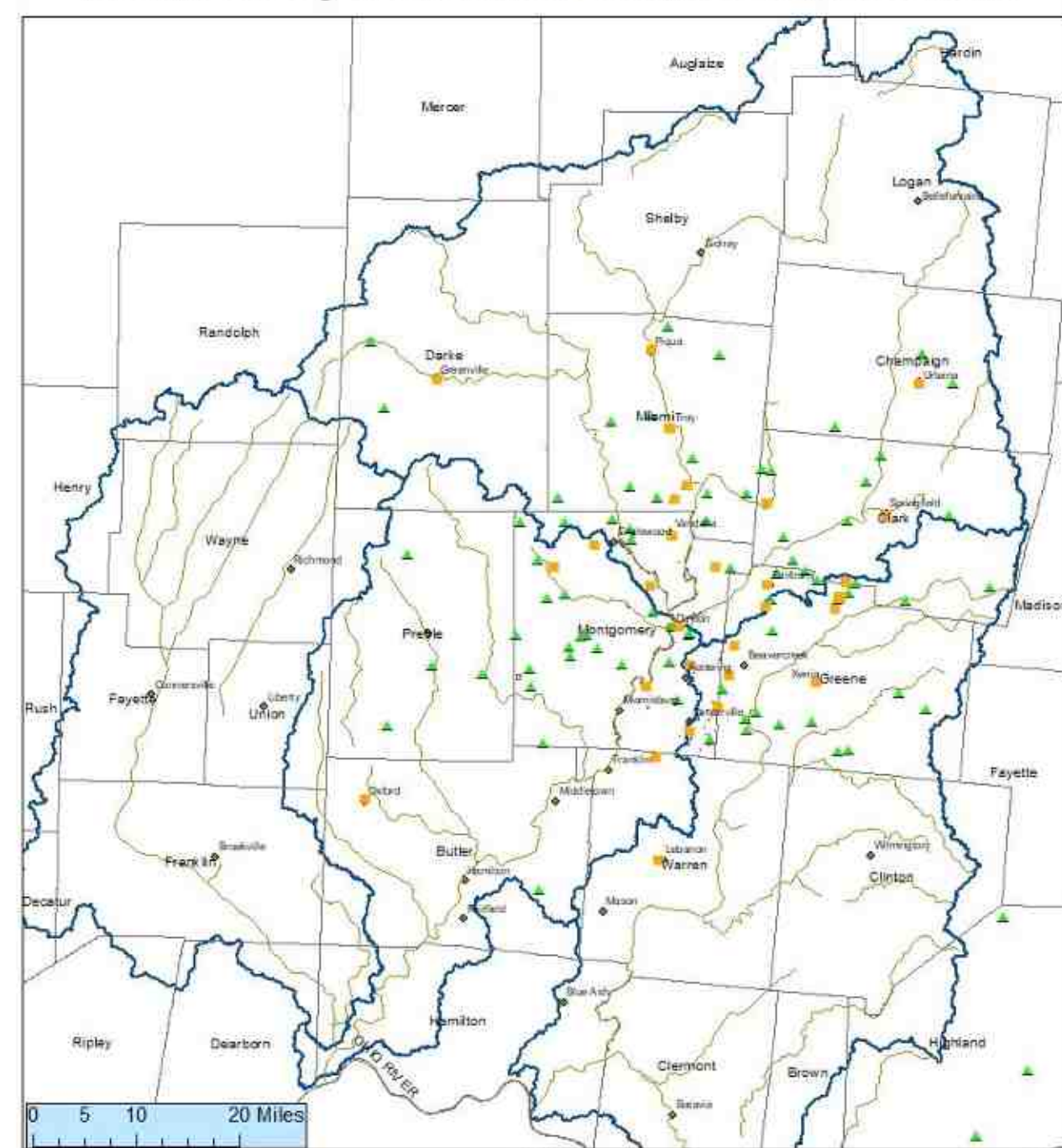
- Defined by USDA as a low-income census tract.⁵
 - At least 500 people, or 33% of the population, live more than 1 mile (urban areas) or more than 10 miles (rural areas) from the nearest supermarket, supercenter, or large grocery store.
 - where a significant number of residents have no access to a vehicle.
- Options for many poorer residents who don't own vehicles are limited to corner or convenience stores.
 - These typically lack fresh or healthy items in favor of pre-packaged high-sodium (unhealthy) items with a long shelf life.

Access to Markets via Public Transportation?

Montgomery County Food Deserts in Relation to Public Transportation

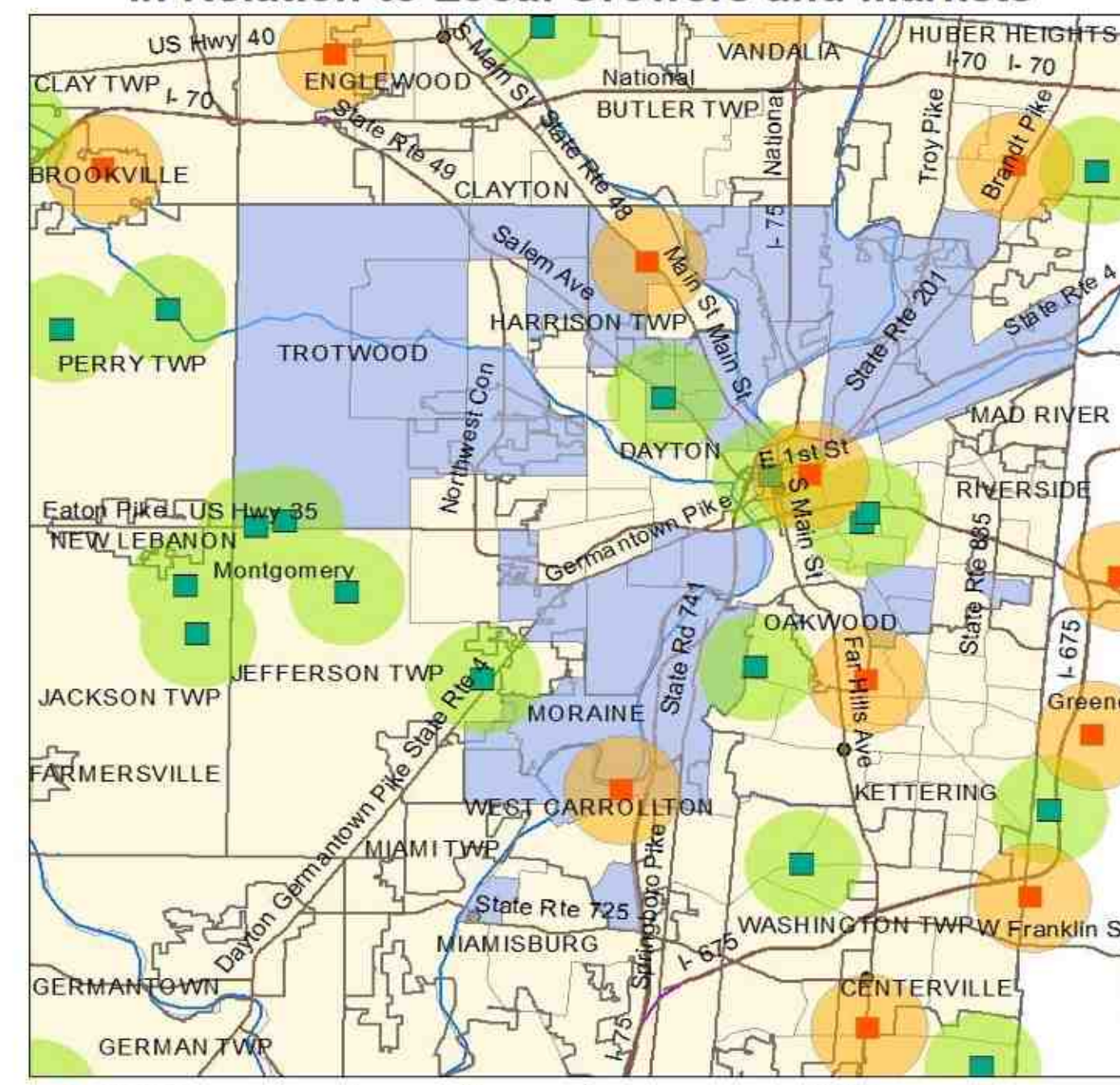


Miami Valley Foodshed Growers and Markets



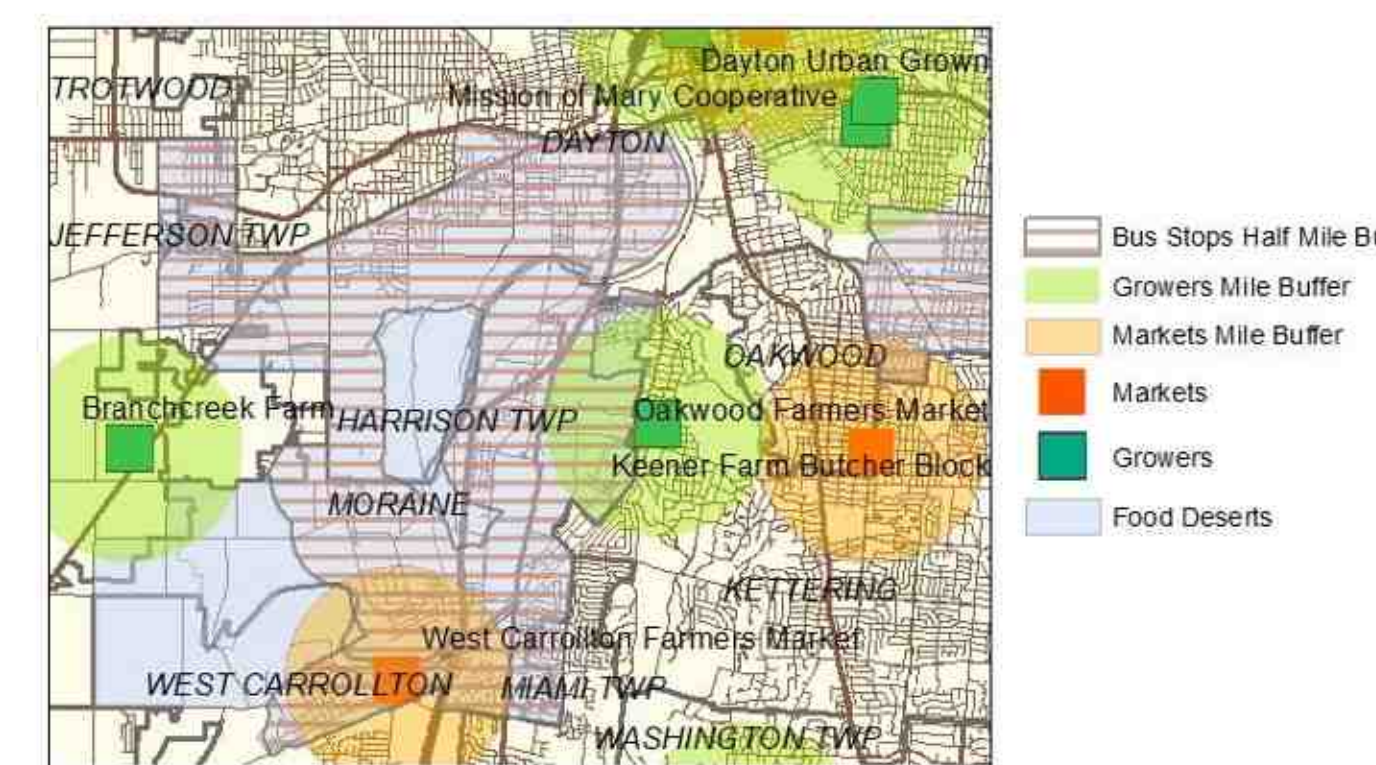
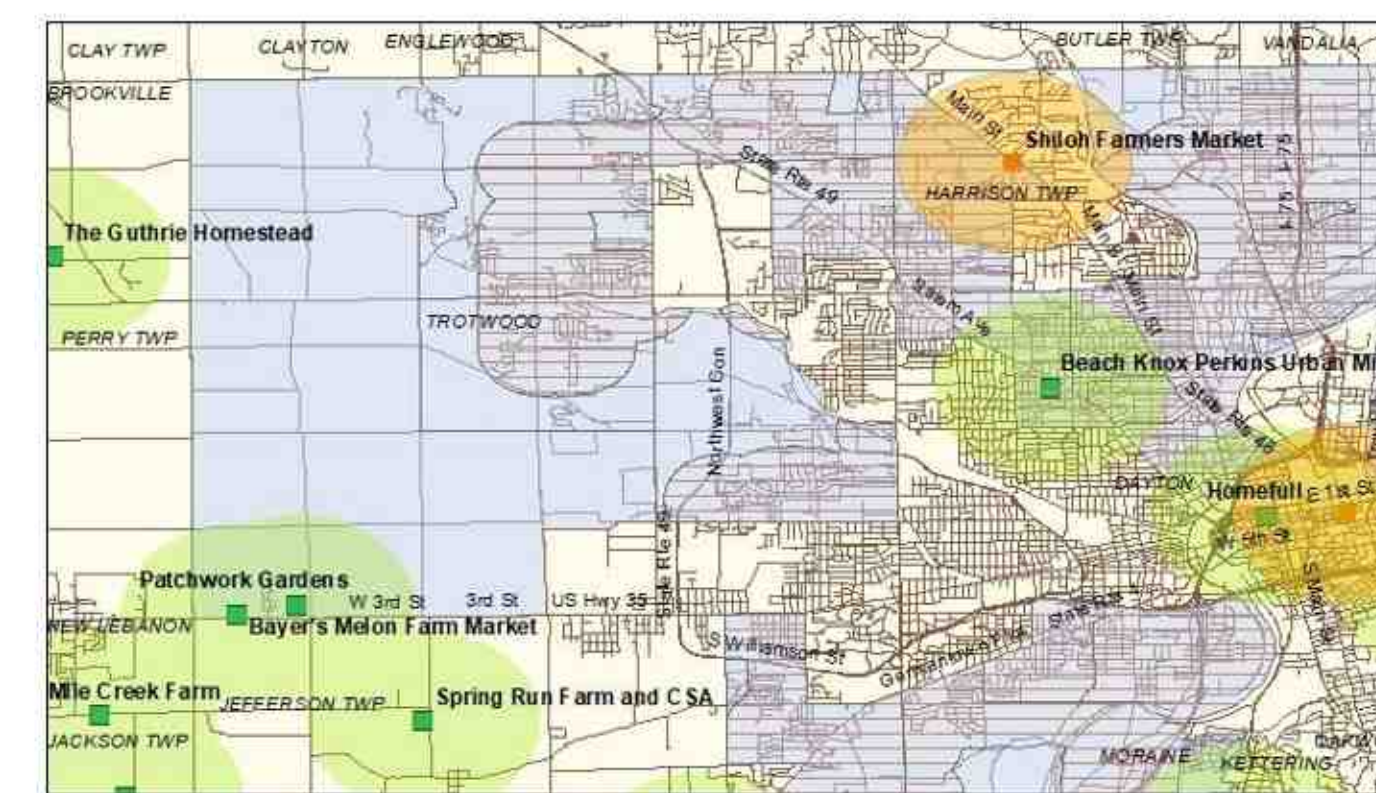
Sources:
 1. <https://www.localharvest.org/dayton-oh>
 2. Local Foods Directory, 14th ed., Spring 2017, B-W Greenway Community Land Trust, www.bwgreenway.org
 3. USDA/NRCS - National Geospatial Center of Excellence 6 Digit Watershed Boundary Dataset 2013
 Projection: State Plane Coordinate System 1983 (Ohio, South) Lambert Conformal Conic
 Cartography by Carol Manda
 Final Project, 29 Apr 2019
 GEO 2210 Spring 2019
 Sinclair Community College

Montgomery County Food Deserts in Relation to Local Growers and Markets



Sources:
 USDA Economic Research Service Food Access Research Atlas
 Projection: State Plane Coordinate System 1983 (Ohio, South) Lambert Conformal Conic
 Cartography by Carol Manda
 Final Project, 29 Apr 2019
 GEO 2210 Spring 2019
 Sinclair Community College

Public Transportation/Distance vs. Markets and Growers



How to connect this bounty with area residents who lack both fresh food and transportation options?

- Partnerships with nearby growers
 - Independent grocers and corner stores
 - Medical facilities, bus terminals, etc.
- Food hubs/exchanges, co-ops
- Mobile grocers
 - bring the food to the neighborhoods
- Improve transportation to/from markets and grocers

Sources

1. Evans, A., Banks, K., Jennings, R. et al. Increasing access to healthful foods: a qualitative study with residents of low-income communities. *International Journal of Behavioral Nutrition and Physical Activity* 12, S5 (2015). <https://doi.org/10.1186/1479-5868-12-S1-S5>
2. Joassart-Marcelli P, Rossiter JS, Bosco FJ. Ethnic markets and community food security in an urban "food desert." *Environment and Planning A: Economy and Space*. 2017;49(7):1642-1663. doi:10.1177/0308518X17700394
3. Pike, Stephanie N et al. Examining the Food Retail Choice Context in Urban Food Deserts, Ohio, 2015. *Preventing Chronic Disease* 14, E90 (2017). doi:10.5888/pcd14.160408
4. "Ohio's Food Desert Crisis", Ohio Developmental Disabilities Council, Nov 2019. <https://ddc.ohio.gov/ohios-food-desert-crisis>
5. <https://www.ers.usda.gov/data-products/food-access-research-atlas/>

